

Ceet 15 ac
Ceet 20 ac

Electric stacker trucks - High load capacity

Load capacity: 1.5 / 2.0 t



by Carrellificio Cesenate



Joystick for lowering speed adjustment



Triplex mast (optional)

TECHNICAL FEATURES

Rated load capacity: 1.5t **Ceet15ac**, 2t **Ceet20ac**

Lifting height: up to 5,000 mm
24V battery (180 to 240Ah)

Lowering proportional control, joystick-controlled lifting and lowering.
Creep speed button for safe manoeuvring in tight spaces with tiller in vertical position.

AC drive motor with kinetic energy recovery system.

Circuitry compartment with removable yellow cover for ease of service.

FOCUS ON ITS ADVANTAGES

Its **sturdy** chassis and side castors ensure maximum **stability** and make it perfect for use with storage racks.

Its wide steering angle allows for **easy pallet handling** in tight aisles.

Safe – keep holding its **ergonomic** handle with both hands while lifting/lowering the load with one finger.

Gently lower the raised load - adjust the lowering speed thanks to its joystick.

Standard equipment

180Ah or 240Ah battery
Lift height: 1,600mm simplex mast,
2,600/3,200mm duplex mast
Joystick-controlled lifting
Lowering proportional control
AC drive motor

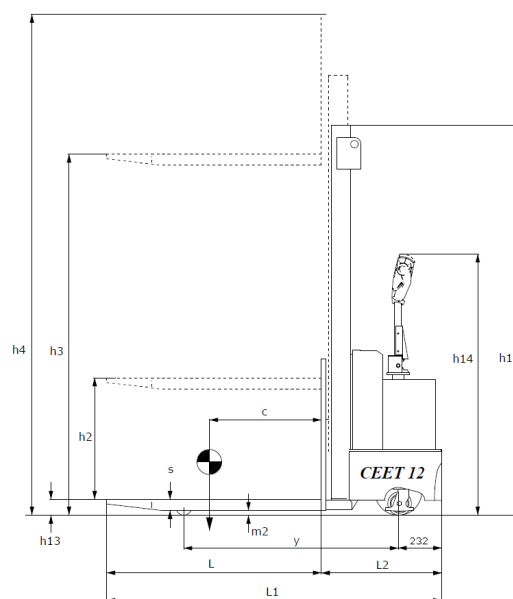
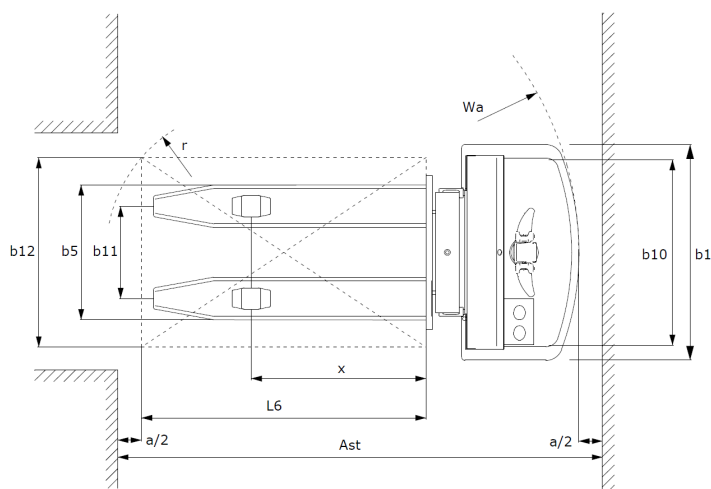
Main optional features

Several lift heights
Full free lift mast
Triplex mast
High-traction drive wheel
Hot-dip galvanized
240Ah battery for **Ceet 15 ac**

Technical data

Technical data sheet according to VDI 2198

Features	1.1	Manufacturer		Logimach	Logimach	Logimach	Logimach
	1.2	Model		Ceet 15 ac 160	Ceet 15 ac 260	Ceet 15 ac 320	Ceet 20 ac 320
	1.3	Drive		Electric	Electric	Electric	Electric
	1.4	Operator type: pedestrian, stand-on		Pedestrian / Stand-on	Pedestrian / Stand-on	Pedestrian / Stand-on	Pedestrian / Stand-on
	1.5	Rated load capacity	Q (t)	1.5	1.5	1.5	2.0
	1.6	Load centre	c (mm)	600	600	600	600
	1.8	Distance between the centre of the front axle and the back of the forks	x (mm)	745	720	720	---
	1.9	Wheelbase	y (mm)	1,221	1,221	1,221	---
Weights	2.1	Truck weight incl. battery (see line 6.5)	kg	745	875	910	---
	2.2	Axle loading, laden, drive end/load end	kg	1,392/853	1,544/831	1,665/745	---
	2.3	Axle loading, unladen, drive end/load end	kg	255/490	263/612	310/600	---
Wheels and rollers	3.1	Tyres, Drive end / Load end (PU = Polyurethane, V = Vulkollan)		PU/V	PU/V	PU/V	PU/V
	3.2	Wheel size, drive end	mm	250x80	250x80	250x80	250x80
	3.3	Wheel size, load end	mm	2x 82x70	2x 82x70	2x 82x70	2x 82x70
	3.4	Support castors (dimensions)	mm	125x55	125x55	125x55	125x55
	3.5	Number of wheels drive end/load end (x = powered)		x1 2/4	x1 2/4	x1 2/4	x1 2/4
	3.6	Track width, drive end	b10 (mm)	704	704	784	---
	3.7	Track width, load end	b11 (mm)	390	390	390	---
Basic dimensions	4.2	Mast, lowered height	h1 (mm)	2,050	1,790	2,050	---
	4.3	Free lift height	h2 (mm)	1,600	30	---	---
	4.4	Forks, lift height	h3 (mm)	1,600	2,600	3,200	3,200
	4.5	Mast, extended height	h4 (mm)	2,050	3,035	3,635	---
	4.9	Height of tiller in driving position, min./max.	h14 (mm)	1,047/1,400	1,047/1,400	1,047/1,400	---
	4.15	Ground clearance, forks lowered	h13 (mm)	90	90	90	90
	4.19	Overall length	l1 (mm)	1,887 – 1,960/2,435	1,887 – 1,960/2,435	1,900 – 1,978/2,450	---
	4.20	Length incl. fork backs	l2 (mm)	712 – 789/1,261	712 – 789/1,261	751 – 828/1,300	---
	4.21	Overall width	b1 (mm)	830	830	910	---
	4.22	Fork dimensions	s/e/l (mm)	70/180/1,150	70/180/1,150	70/180/1,150	---
	4.25	Overall fork width	b5 (mm)	570	570	570	---
	4.32	Ground clearance, centre of wheelbase	m2 (mm)	20	20	20	---
Performance	5.1	Travel speed laden/unladen	km/h	5.5/6	5.5/6	5.5/6	5.5/6
	5.2	Hoist speed laden/unladen	m/s	0.09/0.15	0.09/0.15	0.09/0.15	---
	5.3	Lowering speed, laden/unladen	m/s	0.25/0.20	0.25/0.20	0.25/0.20	---
	5.8	Max. gradeability laden/unladen	%	8/15	8/15	6/15	---
	5.10	Service brake		Electromagnetic	Electromagnetic	Electromagnetic	Electromagnetic
Electric	6.1	Drive motor, rating at S2 = 60 min	kW	0.85	0.85	0.85	1.5
	6.2	Hoist motor, rating at S3 = 10%	kW	2.2	2.2	2.2	3.0
	6.4	Battery voltage, rated capacity K5	V/Ah	24/180	24/180	24/180	24/240
	6.5	Battery weight	kg	170	170	170	---
Other data	8.1	Electric Drive Control		AC controller	AC controller	AC controller	AC controller
	8.4	Sound level at driver's ear (ref. EN 12053)	dB (A)	< 70	< 70	< 70	< 70



All rights reserved for technical modifications and improvements. Misprints reserved. Some images in this brochure may show non-standard features. The accuracy of this brochure has been checked before printing. Since we at Carrellificio Cesenate strive to continuously improve our products, we reserve the right of changing the design, technical features, prices, and colours of these items any time.

CARRELLIFICIO CESENATE DI MINOTTI MARCO & C. SNC

Via delle Dolomiti, 110 – 47521 Cesena (FC) - Italy
 Tel. +39 0547 381150 – Fax +39 0547 631202
 info@carrellificiocesenate.it www.carrellificiocesenate.it

Dealer