

Silver LW

Electric pallet truck Aisi304 stainless steel

Load capacity kg 2.000



Fully washable forks with water, even under pressure (IPx6)



Fish processing room

TECHNICAL FEATURES

Load capacity 2,0t

240Ah battery, up to 270Ah – Aisi304 Stainless steel INOX

Protected against projections of water (min. IPx4, max IPx6).

Sturdy frame built in Aisi304 stainless steel

AC drive motor with kinetic energy recovery system.

2,2kW motor pump

High-traction drive wheel supplied as standard. Suitable for cold-storage rooms (standard).

FOCUS ON ITS ADVANTAGES

Silver LW is our **pallet truck** made of AISI 304 stainless steel - it ensures the greatest **hygiene** and **durability**, even in the toughest environments.

All surfaces are smooth, well-filleted and easy to sanitize: **Silver** is fully washable with fresh water. The frame is built in thick stainless steel to increase strength and limit dimensions.

Powerful, maintenance-free, low-absorption drive motor – **Silver LW** allows you to work for **many hours** and turns handling into a **pleasant experience** and **increase your business**.

The tiller is long to allows the operator to maintain the **safety distance**, especially in curves and to **reduce the effort to steer the pallet truck**.

Standard equipment

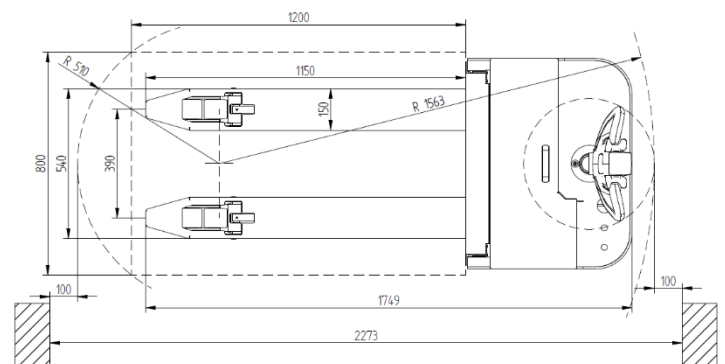
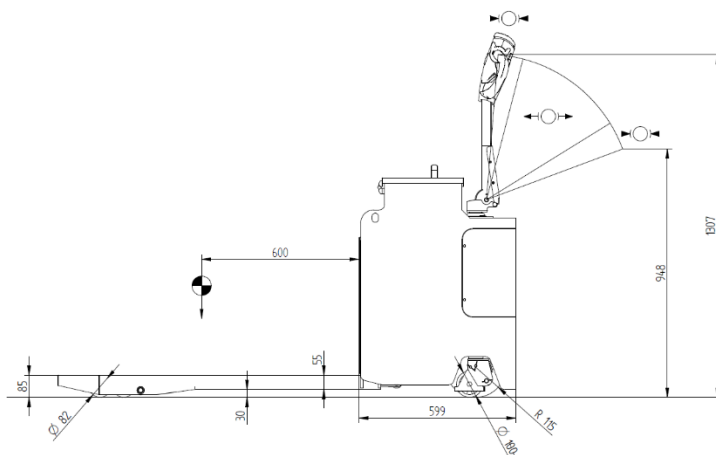
Stainless steel Aisi304 made 240Ah battery enclosed in a stainless steel housing
IPx4 / IPx6 protection
On-board diagnostic
Non-toxic hydraulic oil

Main optional features

Stainless steel Aisi316 made 24V 270Ah battery
Sealed battery
Wheels in different materials
Tandem rollers

Technical data

Features	1.1	Manufacturer		Logimach
	1.2	Model		SILVER LW
	1.3	Drive		Electric
	1.4	Operator type: pedestrian, stand-on		Pedestrian
	1.5	Rated load capacity	Q (t)	2,0
	1.6	Load centre	c (mm)	600
	1.8	Distance between the centre of the front axle and the back of the forks	x (mm)	942
	1.9	Wheelbase	y (mm)	1.388
	Weights	2.1	Truck weight incl. Battery (see line 6.5)	kg
2.2		Axle loading, laden, drive end/load end.	kg	1.660/888
2.3		Axle loading, unladen, drive end/load end	kg	103/445
Wheels and rollers	3.1	Tyres, Drive end / Load end (PU = Polyurethane, V = Vulkollan)		PU/V
	3.2	Wheel size, drive end	mm	230x75
	3.3	Wheel size, load end	mm	82x90
	3.4	Support castors (dimensions)	mm	100x40
	3.5	Number of wheels drive end/load end (x = powered)		x1/2/2-4
	3.6	Track width, drive end	b10 (mm)	605
	3.7	Track width, load end	b11 (mm)	390
Basic dimensions	4.4	Lift	h3 (mm)	110
	4.9	Height of tiller in driving position min/max	h14 (mm)	1.030/1.308
	4.15	Ground clearance, forks lowered	h13 (mm)	85
	4.19	Overall length	l1 (mm)	1.749
	4.20	Length incl. Fork backs	l2 (mm)	599
	4.21	Overall width	b1 (mm)	750
	4.22	Fork dimensions	s/e/l (mm)	55/150/1.150
	4.25	Overall fork width	b5 (mm)	540
	4.32	Ground clearance, centre of wheelbase	m2 (mm)	30
	4.34	Working aisle width with 800x1200 pallet lengthways	Ast (mm)	2.273
4.35	Turning radius	Wa (mm)	1.749	
Performance	5.1	Travel speed laden/unladen	km/h	5,5/5,5
	5.2	Hoist speed laden/unladen	m/s	0,06/0,08
	5.3	Lowering speed laden/unladen	m/s	0,11/0,03
	5.8	Max. gradeability laden/unladen	%	10/18
	5.10	Service brake		Electromagnetic
Electric	6.1	Drive motor, rating at S2 = 60min	kW	1,2
	6.2	Motore diHoist motor, rating at S3 = 10%	kW	2,2
	6.4	Battery voltage, rated capacity K5	V/Ah	240Ah
	6.5	Battery weight	kg	193
Other	8.1	Electric drive control		AC Technology
	8.4	Sound level at driver's ear (ref. EN 12053)	dB (A)	< 70



Technical data sheet according to VDI 2198

Some images in this brochure may show non-standard features. The accuracy of this brochure has been checked before printing. Since we at Carrellificio Cesenate strive to continuously improve our products, we reserve the right of changing the design, technical features, prices, and colours of these items any time

CARRELLIFICIO CESENATE di Minotti Marco & C. SNC

Via Cerchia di Sant'Egidio, 850 – 47521 Cesena (FC) - Italy
Tel +39 0547 381150 – Fax + 39 0547 631202
info@logimach.com www.logimach.com

Concessionario